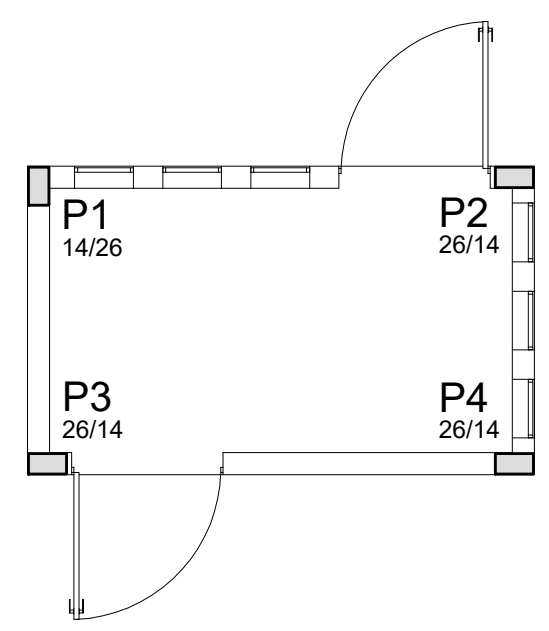
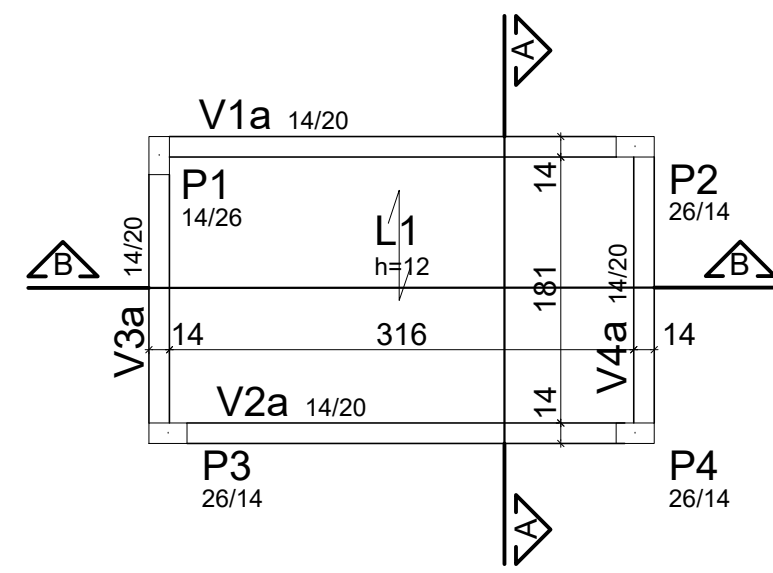


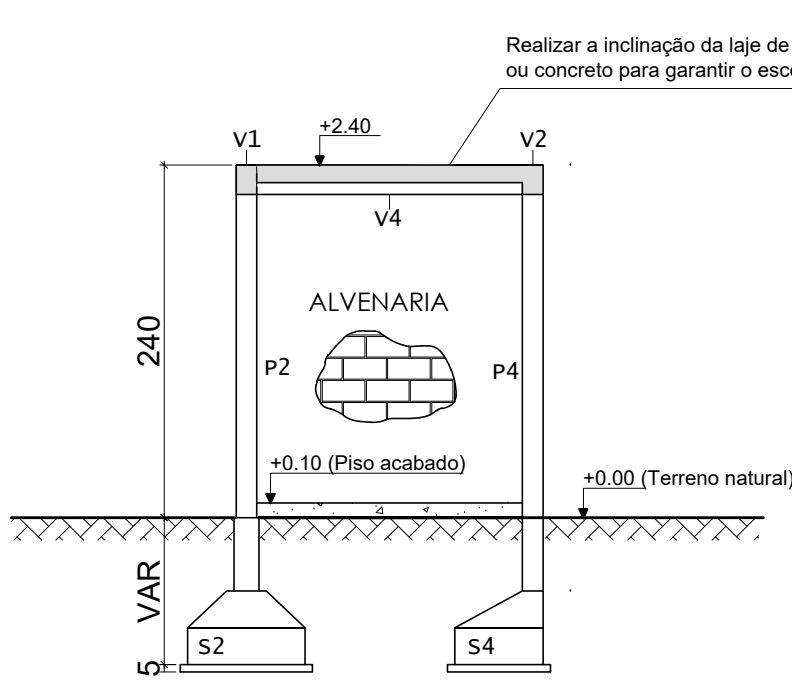
LOCAÇÃO  
ESCALA 1/50



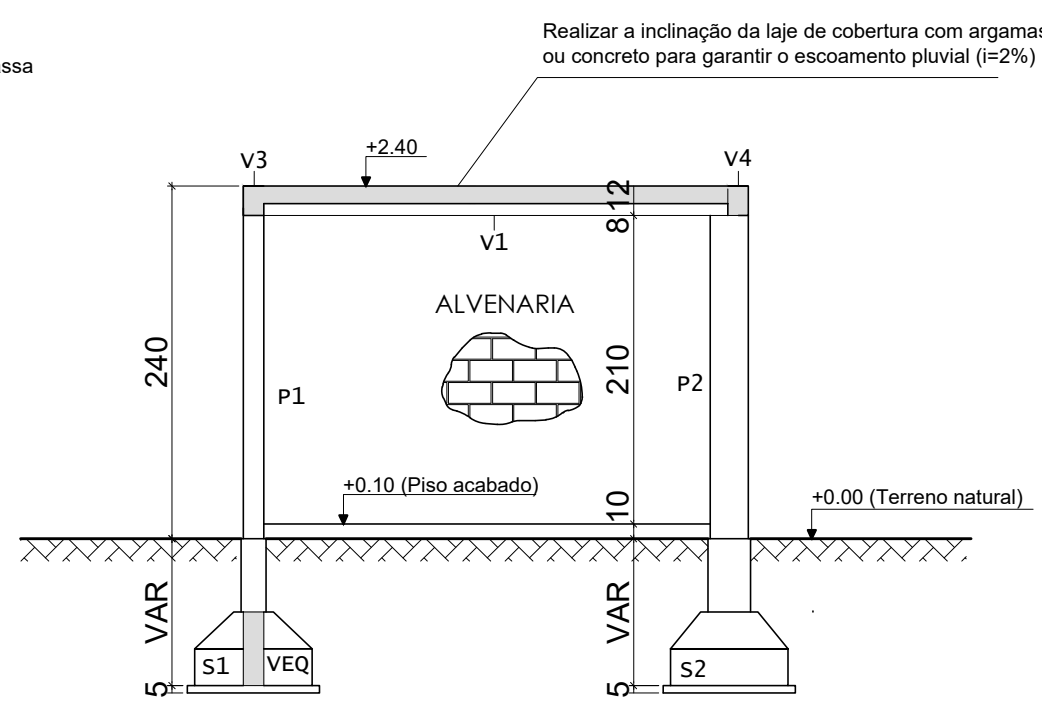
LOCAÇÃO NA ARQUITETURA  
ESCALA 1/50



FORMA DO NÍVEL +2.40  
ESCALA 1/50



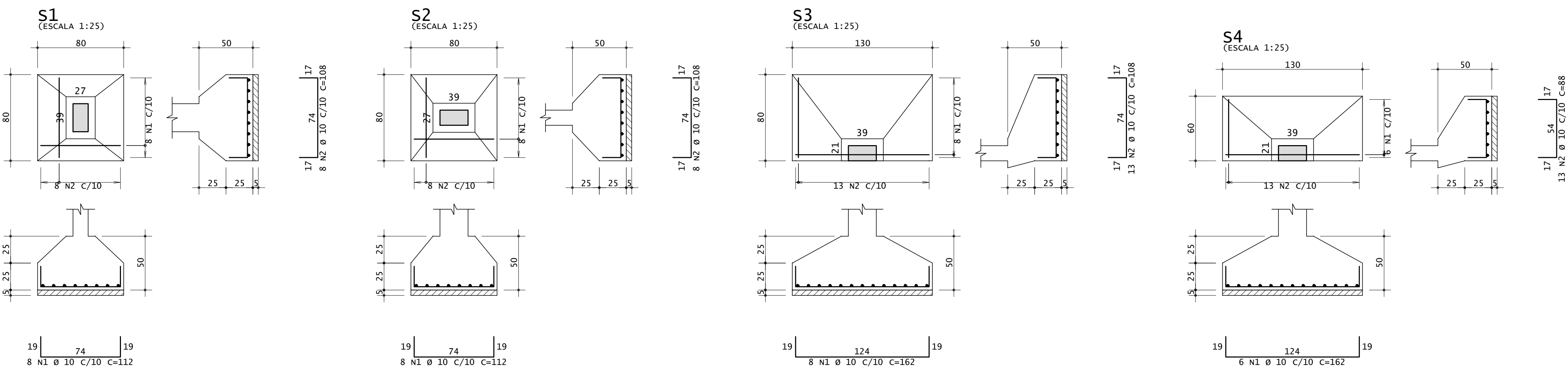
CORTE A-A  
ESCALA 1/50



CORTE B-B  
ESCALA 1/50

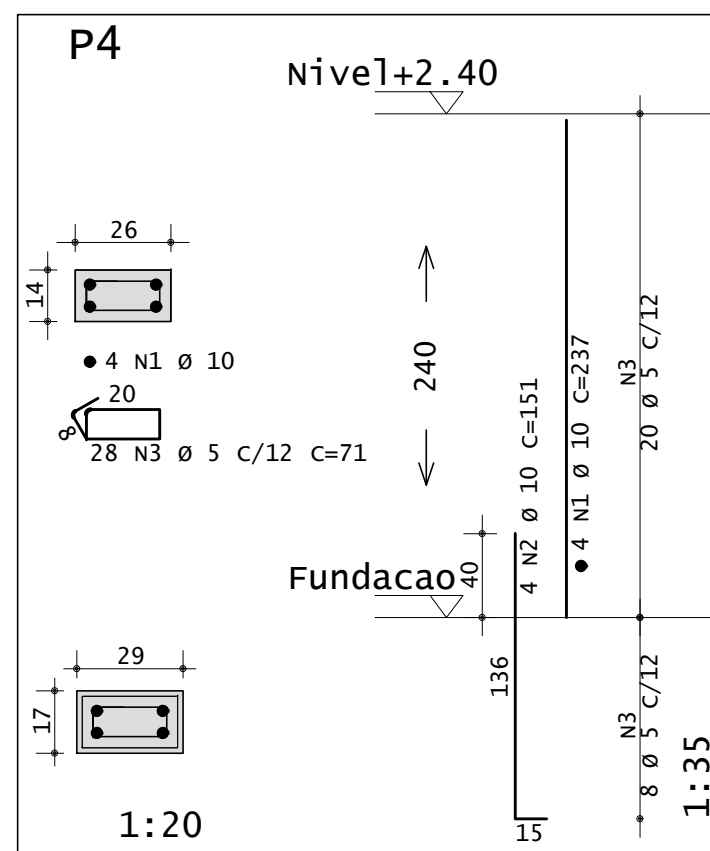
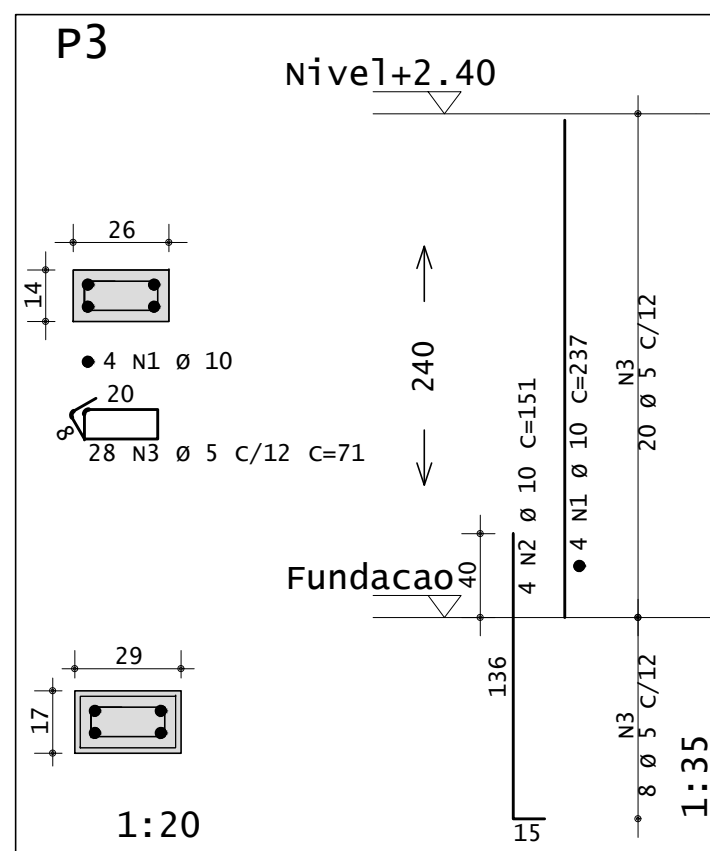
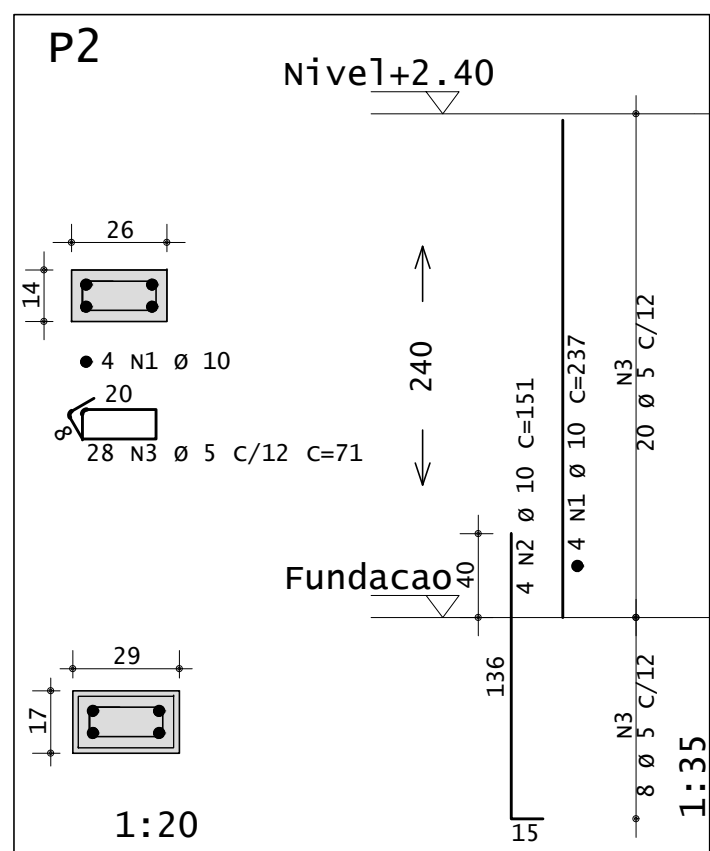
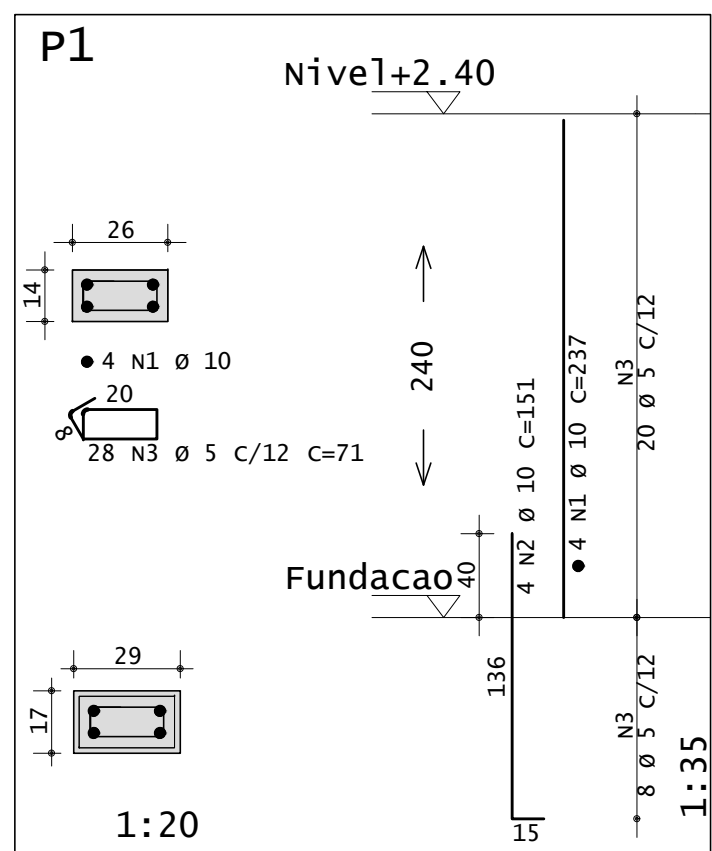
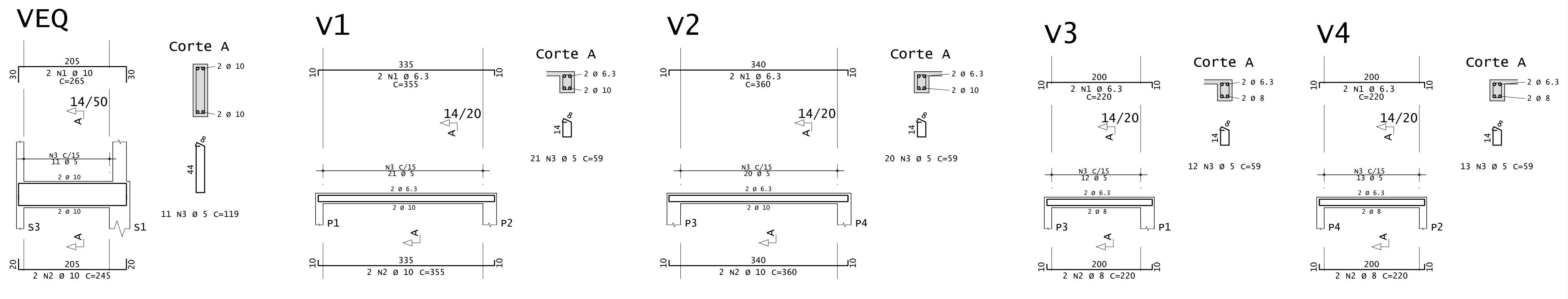
## ARMAÇÃO DAS SAPATAS

ESCALA 1/25



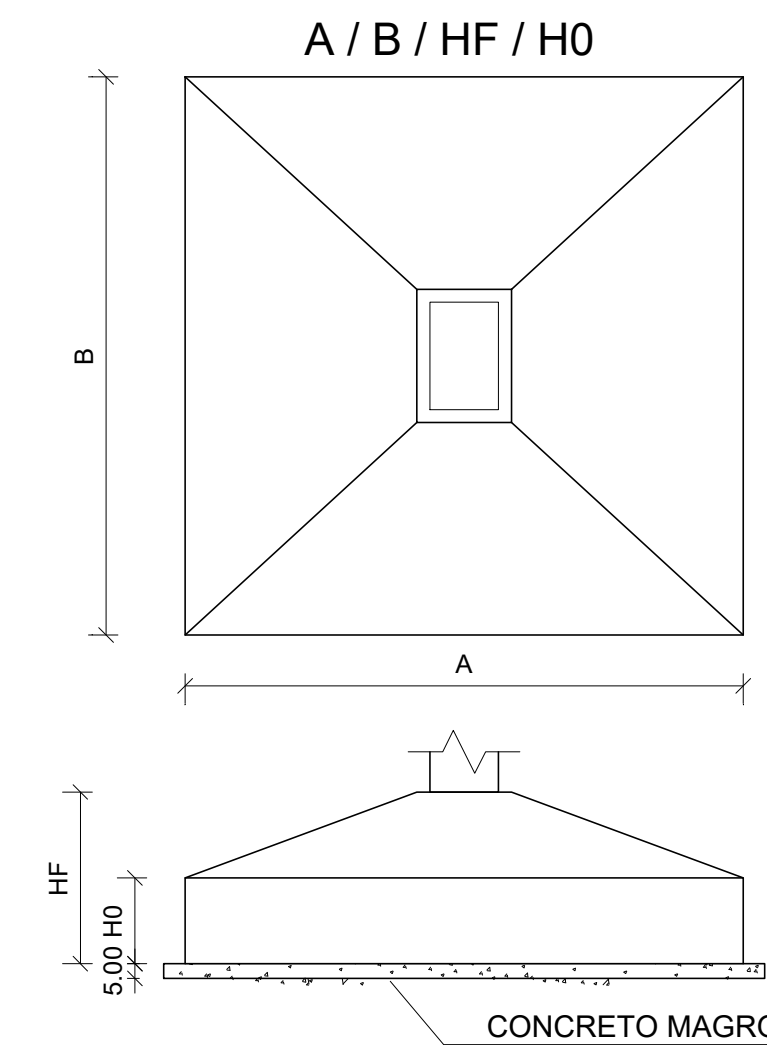
## ARMAÇÃO DAS VIGAS

ESCALA 1/50



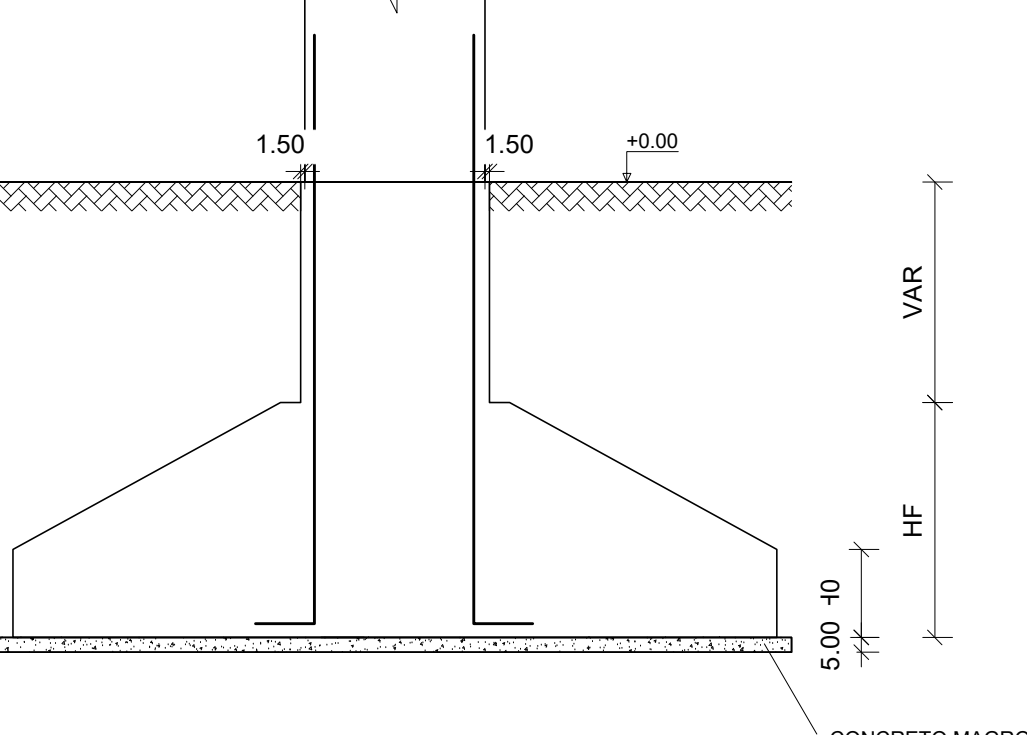
## DETALHE DAS SAPATAS

SEM ESCALA



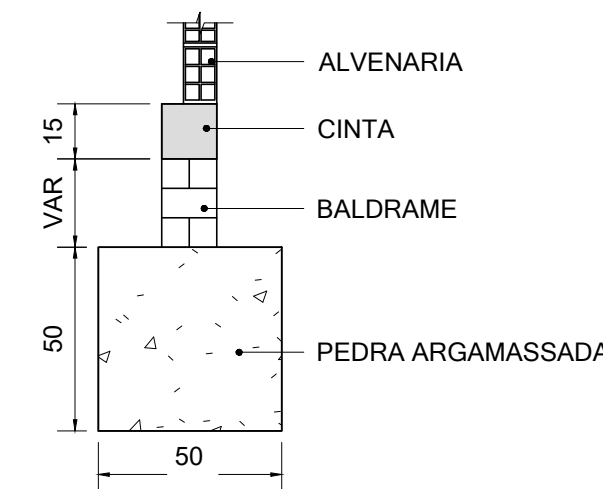
## DETALHE DO COBRIMENTO - PARTE ENTERRADA

SEM ESCALA



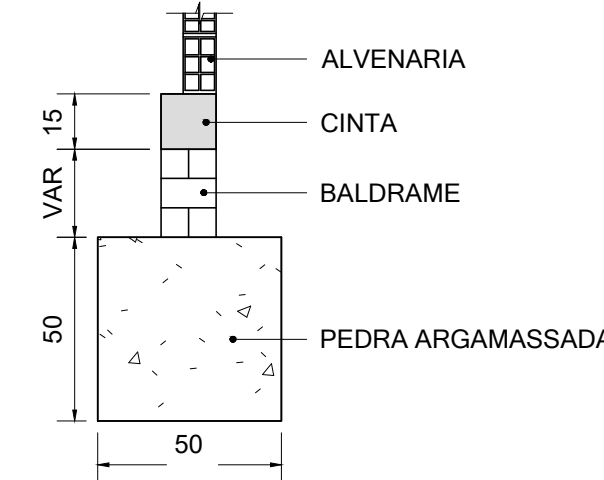
## FUNDAÇÃO DAS PAREDES EXTERNAS

ESC. 1/20



## FUNDAÇÃO DAS PAREDES INTERNAS

ESC. 1/20



AÇO	POS	BIT (mm)	QUANT	COMPRIMENTO (cm)	UNIT (cm)	TOTAL (cm)
S1	S0A	1	10	8	112	896
S2	S0A	2	10	8	108	864
S3	S0A	1	10	8	112	896
S4	S0A	2	10	8	108	864
P1 Lance	S0A	1	10	8	162	1296
P2 Lance	S0A	2	10	8	162	1296
P3 Lance	S0A	1	10	8	162	1296
P4 Lance	S0A	2	10	8	162	1296
V1	S0A	1	10	8	162	1296
V2	S0A	2	10	8	162	1296
V3	S0A	1	10	8	162	1296
V4	S0A	2	10	8	162	1296
CINTAS BALDRAMES	S0A	1	10	8	162	1296
	S0A	2	10	8	162	1296
	S0A	3	10	8	162	1296
	S0A	4	10	8	162	1296
	S0A	5	10	8	162	1296
	S0A	6	10	8	162	1296
	S0A	7	10	8	162	1296
	S0A	8	10	8	162	1296
	S0A	9	10	8	162	1296
	S0A	10	10	8	162	1296
	S0A	11	10	8	162	1296
	S0A	12	10	8	162	1296
	S0A	13	10	8	162	1296
	S0A	14	10	8	162	1296
	S0A	15	10	8	162	1296
	S0A	16	10	8	162	1296
	S0A	17	10	8	162	1296
	S0A	18	10	8	162	1296
	S0A	19	10	8	162	1296
	S0A	20	10	8	162	1296
	S0A	21	10	8	162	1296
	S0A	22	10	8	162	1296
	S0A	23	10	8	162	1296
	S0A	24	10	8	162	1296
	S0A	25	10	8	162	1296
	S0A	26	10	8	162	1296
	S0A	27	10	8	162	1296
	S0A	28	10	8	162	1296
	S0A	29	10	8	162	1296
	S0A	30	10	8	162	1296
	S0A	31	10	8	162	1296
	S0A	32	10	8	162	1296
	S0A	33	10	8	162	1296
	S0A	34	10	8	162	1296
	S0A	35	10	8	162	1296
	S0A	36	10	8	162	1296
	S0A	37	10	8	162	1296
	S0A	38	10	8	162	1296
	S0A	39	10	8	162	1296
	S0A	40	10	8	162	1296
	S0A	41	10	8	162	1296
	S0A	42	10	8	162	1296
	S0A	43	10	8	162	1296
	S0A	44	10	8	162	1296
	S0A	45	10	8	162	1296
	S0A	46	10	8	162	1296
	S0A	47	10	8	162	1296
	S0A	48	10	8	162	1296
	S0A	49	10	8	162	1296
	S0A	50	10	8	162	1296
	S0A	51	10	8	162	1296
	S0A	52	10	8	162	1296
	S0A	53	10	8	162	1296
	S0A	54	10	8	162	1296
	S0A	55	10	8	162	1296
	S0A	56	10	8	162	1296
	S0A	57	10	8	162	1296
	S0A	58	10	8	162	1296
	S0A	59	10	8	162	1296
	S0A	60	10	8	162	1296
	S0A	61	10	8	162	1296
	S0A	62	10	8	162	1296
	S0A	63	10	8	162	1296
	S0A	64	10	8	162	1296
	S0A	65	10	8	162	1296
	S0A	66	10	8	162	1296
	S0A	67	10	8	162	1296
	S0A	68	10	8	162	1296
	S0A	69	10	8	162	1296
	S0A	70	10	8	162	1296
	S0A	71	10	8	162	1296
	S0A	72	10	8	162	1296
	S0A	73	10	8	162	1296
	S0A	74	10	8	162	1296
	S0A	75	10	8	162	1296
	S0A	76	10	8	162	1296
	S0A	77	10	8	162	1296
	S0A	78	10	8	162	1296
	S0A	79	10	8	162	1296
	S0A	80	10	8	162	1296
	S0A	81	10	8	162	1296
	S0A	82	10	8	162	1296
	S0A	83	10	8	162	1296
	S0A	84	10	8	162	1296
	S0A	85	10	8	162	1296
	S0A	86	10	8	162	1296
	S0A	87	10	8	162	1296
	S0A	88	10	8	162	1296
	S0A	89	10	8	162	1296
	S0A	90	10	8	162	1296
	S0A	91	10	8	162	1296
	S0A	92	10	8	162	1296
	S0A	93	10	8	162	1296
	S0A	94	10	8	162	1296
	S0A	95	10	8	162	1296
	S0A	96	10	8	162	1296
	S0A	97	10	8	162	1296
	S0A	98	10	8	162	1296
	S0A	99	10	8	162	1296
	S0A	100	10	8	162	1296

RESUMO DE AÇO					
AÇO	BIT (mm)	COMPR (m)		PESO (kg)	
60A	5	165			26
S0A	6,3	66			16
S0A	8	9			3
S0A	10	168			103
Peso Total		60A =		26	kg
Peso Total		S0A =		122	kg

**ARMAÇÃO DAS CINTAS BALDRAMES**

ESC.: 1/25

4 N1 Ø6,3 C= CORR  
(EMENDAS C=40)

15

10

72 N2 Ø5 C/15 C=50